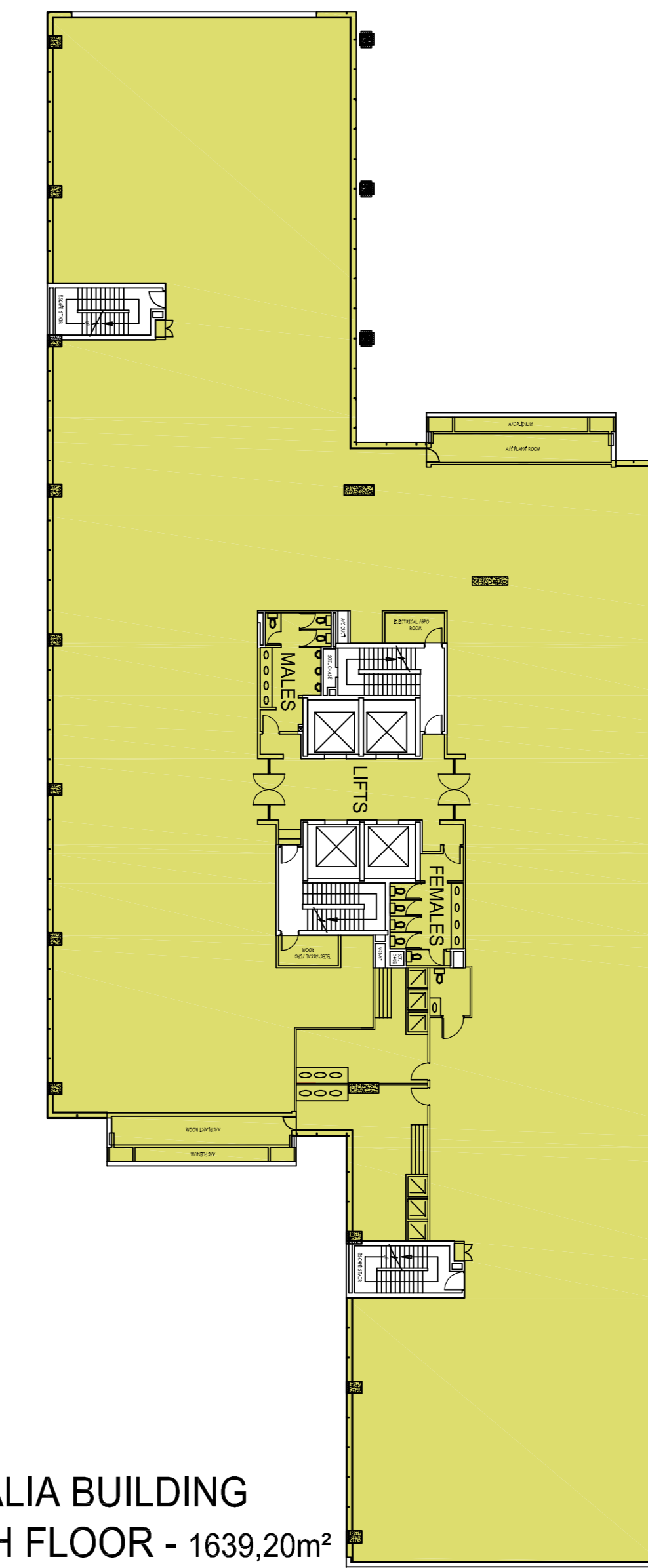


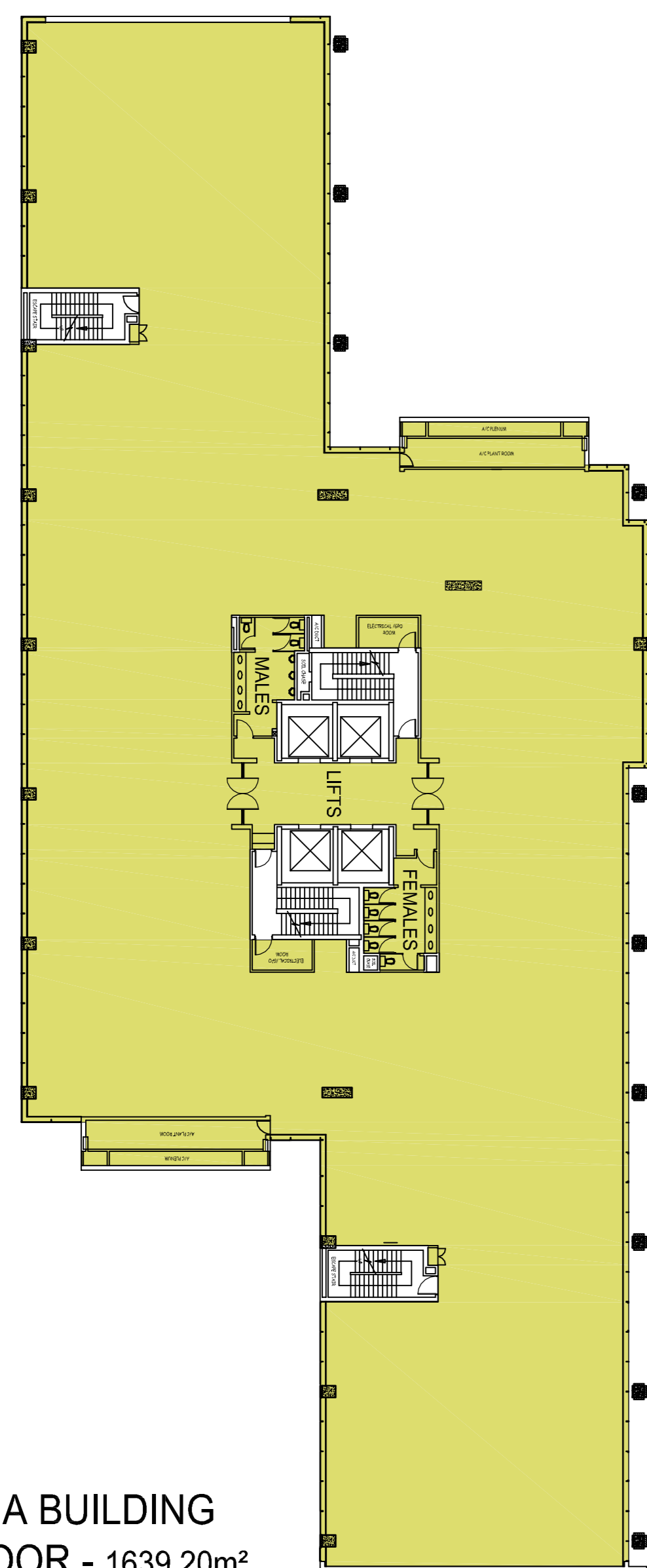
MINERALIA BUILDING  
GROUND FLOOR - 150,38m<sup>2</sup>

| USEABLE        | PRIMARY            | BALCONIES     | REMOTE             | RENTABLE           | TENANT             | FLOOR   |
|----------------|--------------------|---------------|--------------------|--------------------|--------------------|---------|
| 150.38         | 1.557029548        |               | 3.040843086        | 154.9778726        | Dept. Public Works | Ground  |
| 1639.2         | 16.9722226         |               | 33.14636245        | 1689.318585        | Dept. Public Works | Fourth  |
| 1639.2         | 16.9722226         |               | 33.14636245        | 1689.318585        | Dept. Public Works | Fifth   |
| 1639.2         | 16.9722226         |               | 33.14636245        | 1689.318585        | Dept. Public Works | Sixth   |
| 1626.77        | 16.84352279        | 53.79         | 32.89501467        | 1676.508537        | Dept. Public Works | Seventh |
| 1368.33        | 14.16764358        | 244.77        | 27.66908378        | 1410.166727        | Dept. Public Works | Eighth  |
| <b>8063.08</b> | <b>83.48486373</b> | <b>298.56</b> | <b>163.0440289</b> | <b>8309.608893</b> | Public Works only  |         |

Note: Balconies are not included in rentable area calculations.



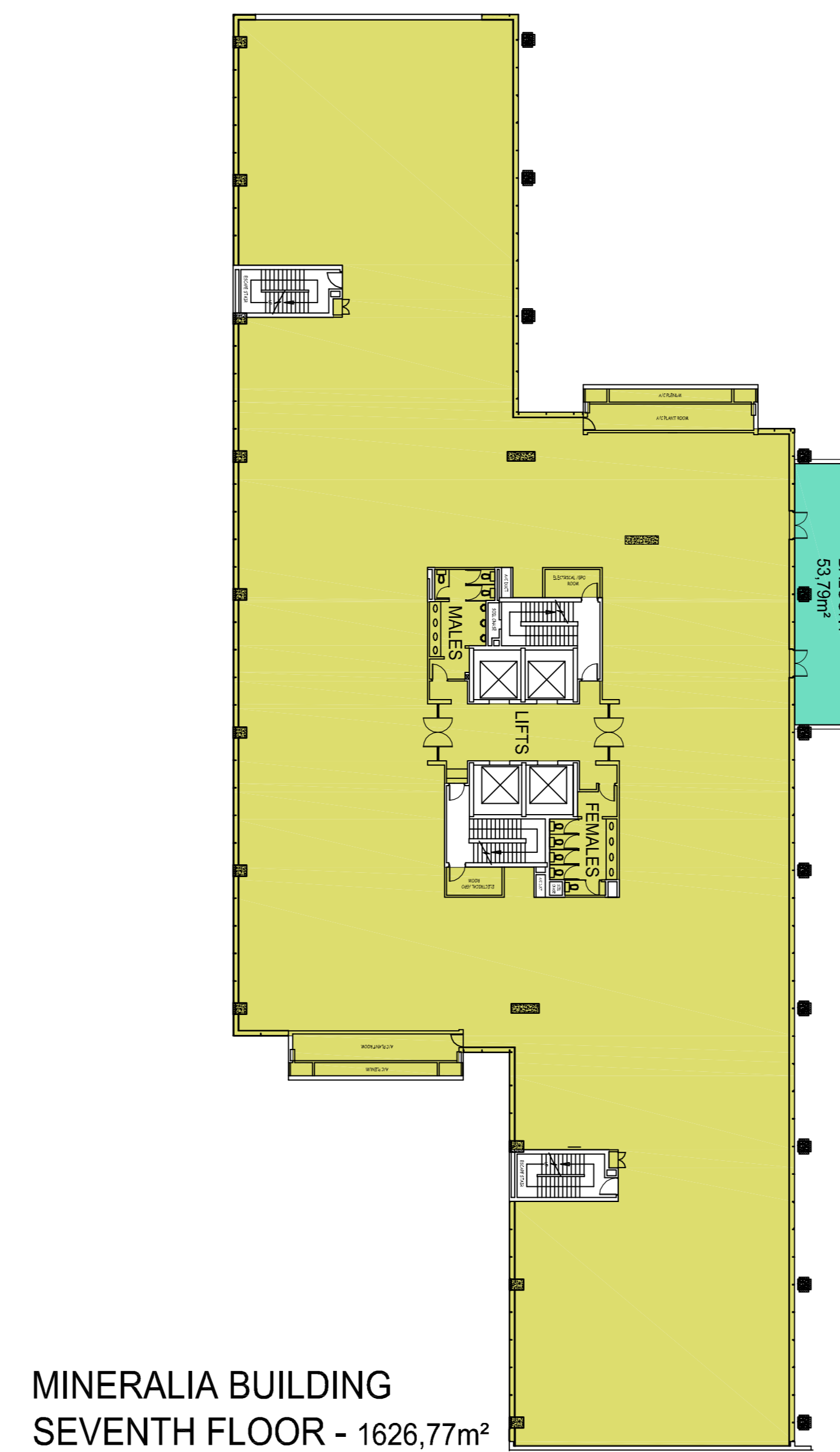
MINERALIA BUILDING  
FOURTH FLOOR - 1639,20m<sup>2</sup>



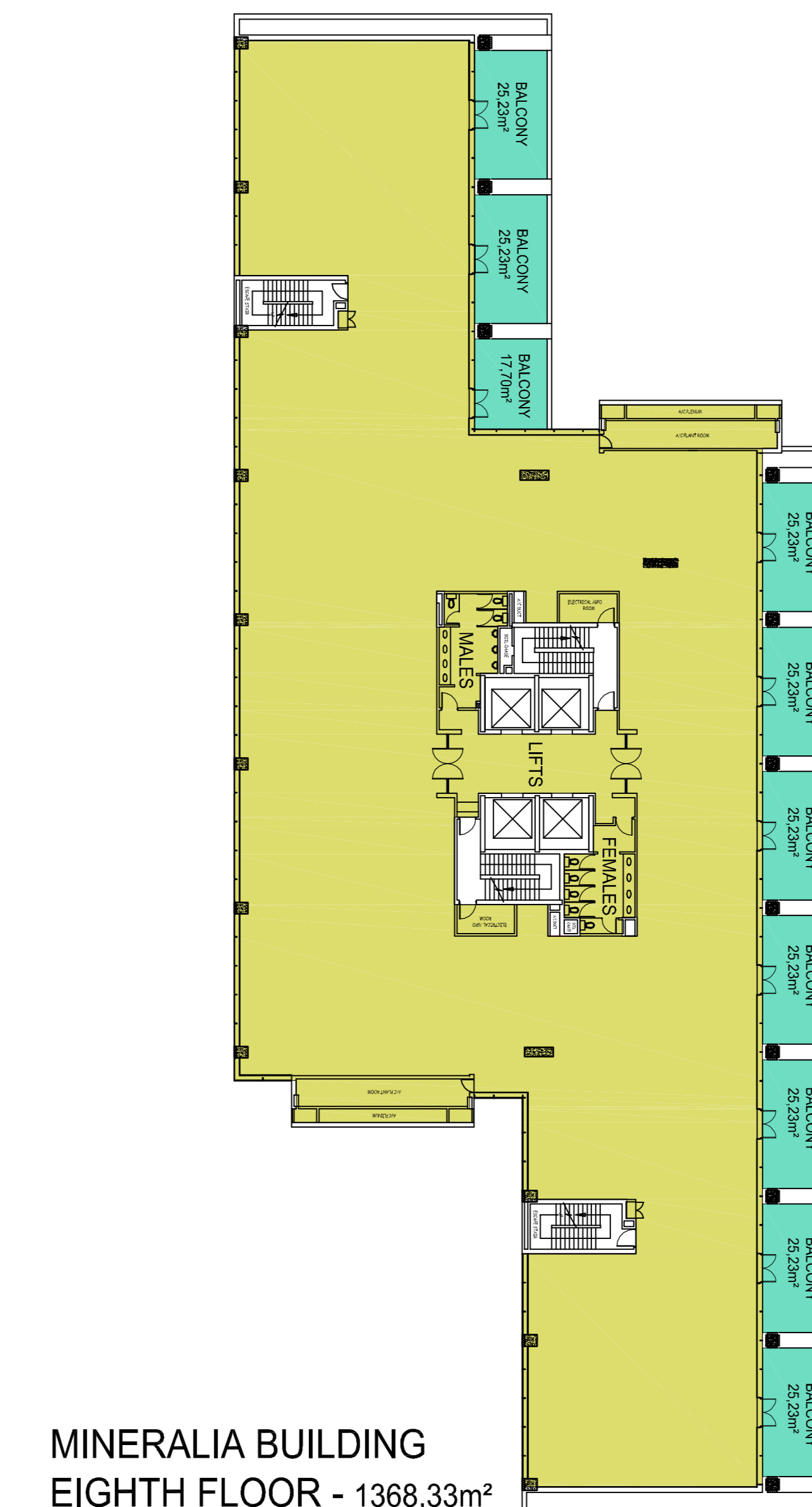
MINERALIA BUILDING  
FIFTH FLOOR - 1639,20m<sup>2</sup>



MINERALIA BUILDING  
SIXTH FLOOR - 1639,20m<sup>2</sup>



MINERALIA BUILDING  
SEVENTH FLOOR - 1626,77m<sup>2</sup>



MINERALIA BUILDING  
EIGHTH FLOOR - 1368,33m<sup>2</sup>

GENERAL DISCLAIMER:

- The SAPOA Method for Measuring Areas relevant at the time of issuing this drawing is; Published by SAPOA, Effective Date 01.08.2005.
- While every effort has been made to ensure accuracy, it must be noted that buildings are by nature not always accurately built.
- Variances in measuring equipment will also produce different lengths and areas.
- As a result subsequent re measurement can produce different results as you will invariably measure the same space at a different point.
- The measurements and subsequent calculations are a theoretical exercise based on a computer model, with the appropriate site verification. The computer model may vary from the built version.
- We strongly recommend that any lease concluded on the basis of this drawing and calculations include a clause that upon remeasurement, the parties agree that they will not dispute any variation in area that is less than 2% of the Gross Rentable Area.
- Any alterations made to the premises after the date of this drawing must be reported to our office on commencement of works.

Measured in accordance with

**CERTIFIED**

SAPOA guidelines of 2005

LANDLORD COPY

**Chris Owtram**  
architecture

PO Box 1926, Pinegowrie, 2123  
E-mail: chrisowtram@absamail.co.za

Cell: 082 493 7474 fax: 011-704 0704

PROJECT:

MINERALIA BUILDING  
BRAAMFONTEIN

DRAWING:

RENTABLE AREAS  
DEPT. PUBLIC WORKS

PROJ.No:  
MB/9864

DRWG.No:  
01

DATE:  
28 FEB. 2007

SCALE:  
NTS