

USEABLE	PRIMARY	BALCONIES	REMOTE	RENTABLE	TENANT	FLOOR
1368.33	14.16764358	244.77	27.66908378	1410.166727	Dept. Public Works	Eighth

GENERAL DISCLAIMER:

- The SAPOA Method for Measuring Areas relevant at the time of issuing this drawing is; Published by SAPOA, Effective Date 01.08.2005.
- While every effort has been made to ensure accuracy, it must be noted that buildings are by nature not always accurately built.
- Variances in measuring equipment will also produce different lengths and areas.
- As a result subsequent re-measurement can produce different results as you will invariably measure the same space at a different point.
- The measurements and subsequent calculations are a theoretical exercise based on a computer model, with the appropriate site verification. The computer model may vary from the built version.
- We strongly recommend that any lease concluded on the basis of this drawing and calculations include a clause that upon remeasurement, the parties agree that they will not dispute any variation in area that is less than 2% of the Gross Rentable Area.
- Any alterations made to the premises after the date of this drawing must be reported to our office on commencement of works.

Measured in accordance with

CERTIFIED

SAPOA guidelines of 2005

TENANT COPY

Chris Owtram
architecture

PO Box 1926, Pinegowrie, 2123
E-mail: chrisowtram@absamail.co.za

Cell: 082 493 7474 fax: 011-704 0704

PROJECT:

MINERALIA BUILDING
BRAAMFONTEIN

DRAWING:

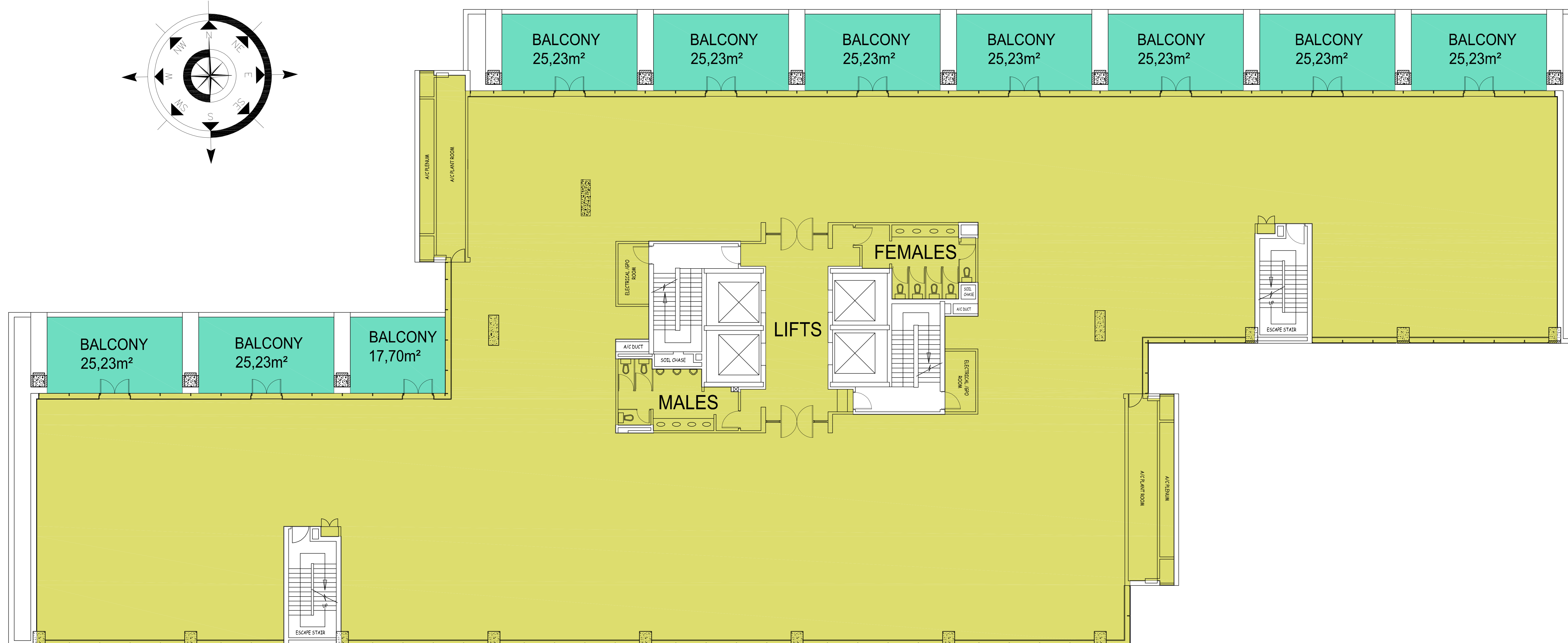
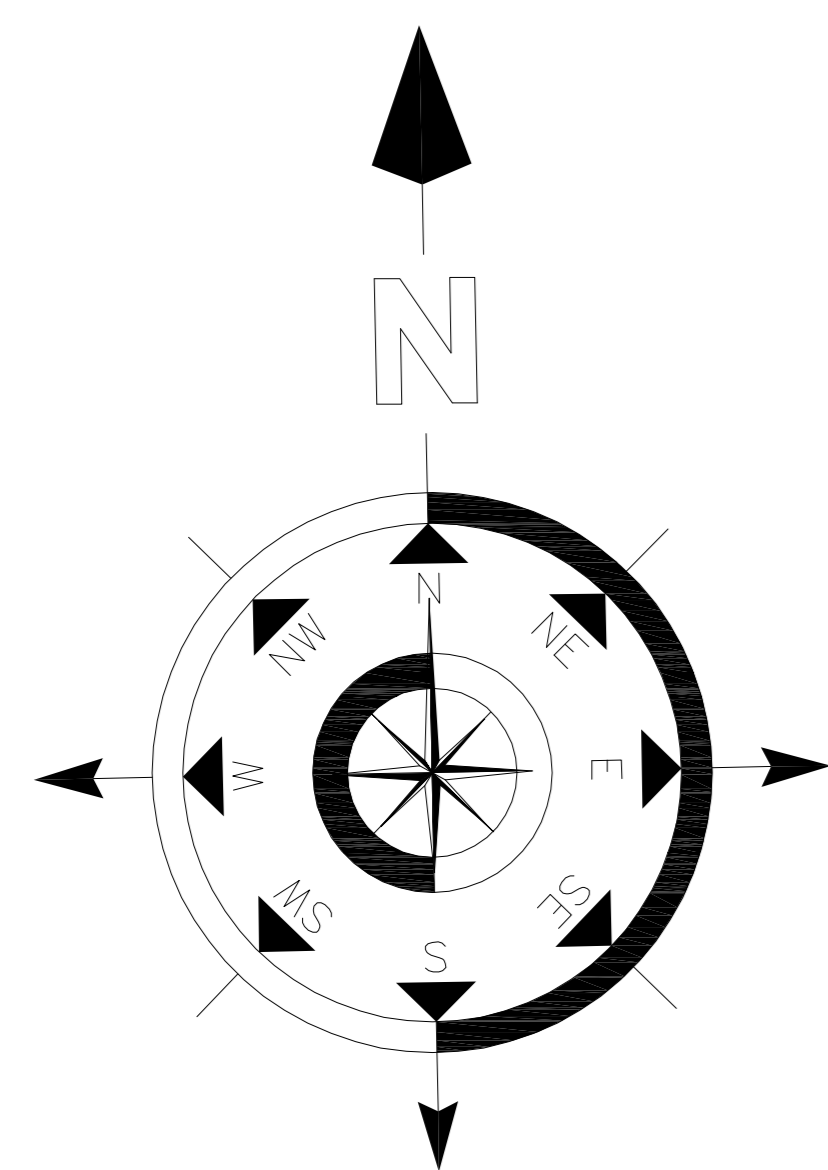
RENTABLE AREAS
EIGHTH FLOOR

PROJ.No:
MB/9864

DRWG.No:
10

DATE:
12 MARCH 2007

SCALE:
NTS



MINERALIA BUILDING
EIGHTH FLOOR - 1368,33m²