

USEABLE	PRIMARY	SECONDARY	REMOTE	RENTABLE	TENANT	FLOOR
1639.2	16.9722226		33.14636245	1689.318585	Dept. Public Works	Fifth

**GENERAL DISCLAIMER:**

- The SAPOA Method for Measuring Areas relevant at the time of issuing this drawing is; Published by SAPOA, Effective Date 01.08.2005.
- While every effort has been made to ensure accuracy, it must be noted that buildings are by nature not always accurately built.
- Variences in measuring equipment will also produce different lengths and areas.
- As a result subsequent re measurement can produce different results as you will invariably measure the same space at a different point.
- The measurements and subsequent calculations are a theoretical exercise based on a computer model, with the appropriate site verification. The computer model may vary from the built version.
- We strongly recommend that any lease concluded on the basis of this drawing and calculations include a clause that upon remeasurement, the parties agree that they will not dispute any variation in area that is less than 2% of the Gross Rentable Area.
- Any alterations made to the premises after the date of this drawing must be reported to our office on commencement of works.

Measured in accordance with

**CERTIFIED**

SAPOA guidelines of 2005

**TENANT COPY**

**Chris Owtram**  
architecture

PO Box 1926, Pinegowrie, 2123  
E-mail: chrisowtram@absamail.co.za  
Cell: 082 493 7474 fax: 011-704 0704

**PROJECT:**  
MINERALIA BUILDING  
BRAAMFONTEIN

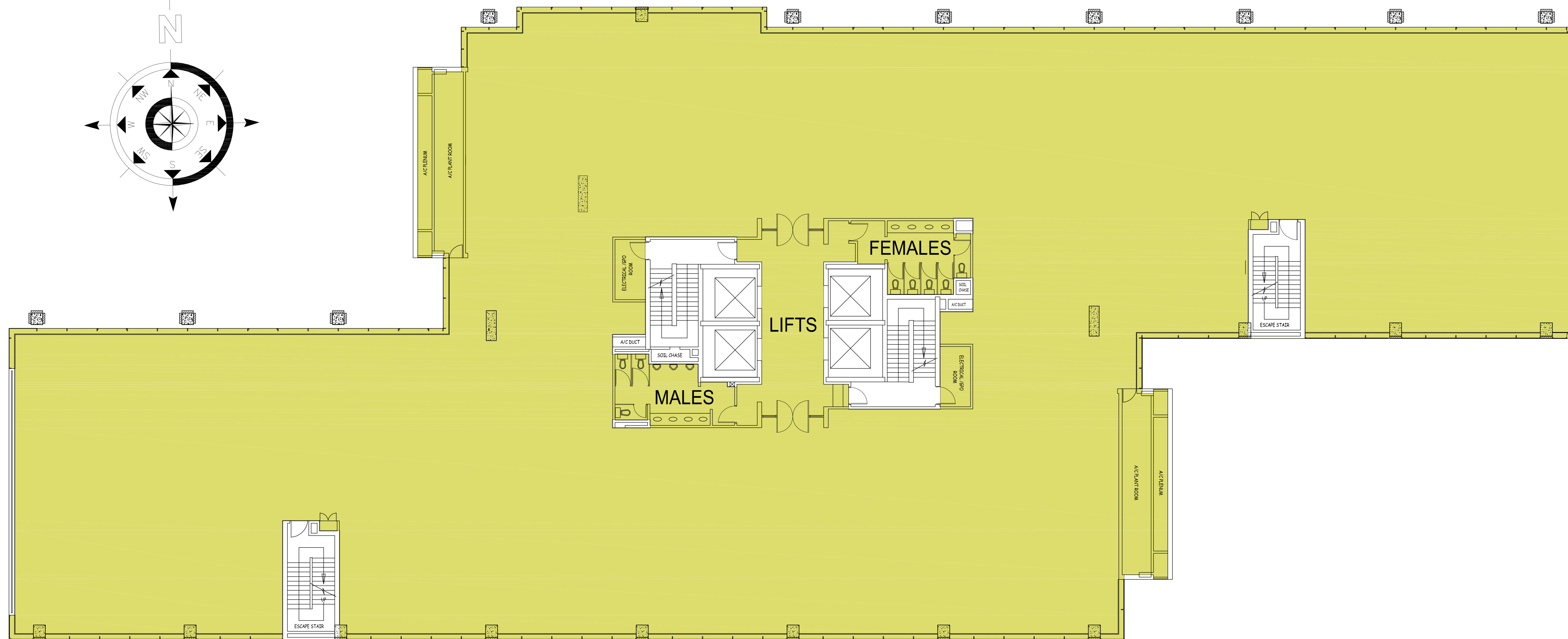
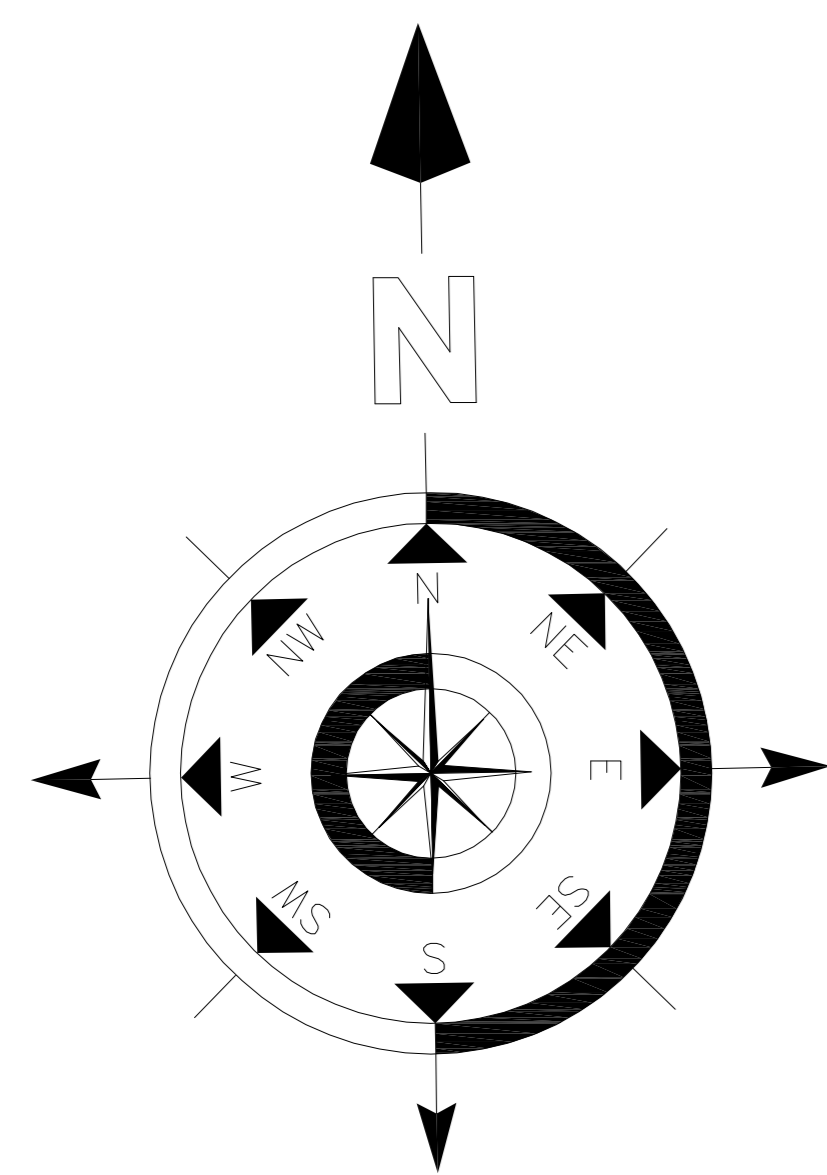
**DRAWING:**  
RENTABLE AREAS  
FIFTH FLOOR

PROJ.No:  
MB/9864

DRWG.No:  
07

DATE:  
12 MARCH 2007

SCALE:  
NTS



**MINERALIA BUILDING**  
**FIFTH FLOOR - 1639,20m<sup>2</sup>**